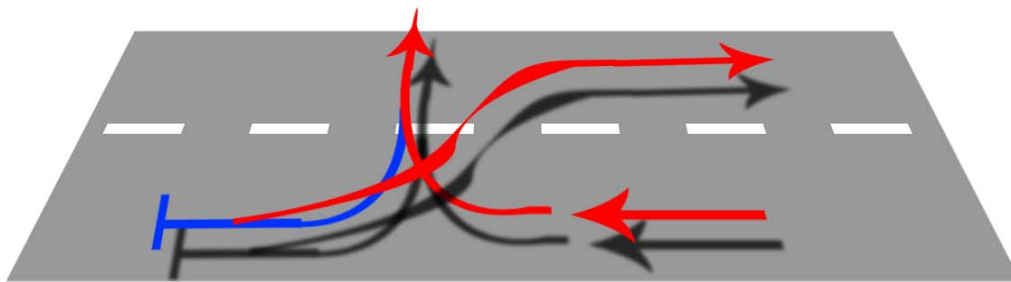




MANOEUVERS - Turn in the road.



Key

- Forward
- Reverse

Stop on the left 5" from kerb (parallel / wheel straight) - 6 point check L to R
Creep forward slowly / Spin wheel fast full Right lock
Slowly cross road - Look R and L - Slow to creep as approaching kerb
Just before reaching kerb, Spin wheel 2 full turns fast to L - Stop car.

Apply handbrake - Select reverse - Clutch to biting point - Look 360° R to L
Release handbrake slowly (car shouldn't move) - Look over L shoulder
Reverse slowly - Fast spin wheel to full L lock
At 1/2 way across road change check L to R - Look over R shoulder at kerb
Slow to creep, fast spin wheel 2 full turns fast to R - Stop car.

Apply handbrake - Select 1st gear - Clutch to biting point - 6 point check L to R
Release handbrake slowly (car shouldn't move) - Creep forward - Spin wheel to R
When parallel to kerb straighten wheel and proceed along road.