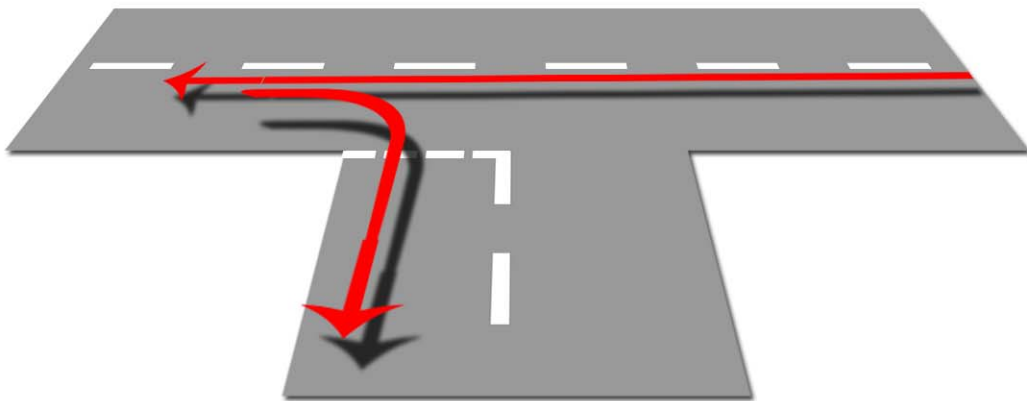




MANOEUVERS - REVERSE LEFT, ROUND CORNER



Use **MSM** routine - Stop on Left, 3 car lengths before junction - 5" from kerb
Note type of corner (round or square), (wide or narrow road), (uphill or down)

IF ROUND:-

6 POINT CHECK - Slowly move forward to a position 3 car lengths the over side of junction
Stop 1/2 metre from kerb / parallel / wheel straight

Apply handbrake - Select reverse gear - 6 point check Right to Left

If clear behind - Release handbrake slowly - Reverse slowly, looking through rear window, keeping wheel straight.

When the rear of car is just in line with the end of the straight - Stop car - Apply handbrake
Check over Right shoulder for traffic - Check road ahead and road your entering
Pedestrians????

Slowly reverse car turning wheel to Left, just enough to keep the car parallel with the kerb

Continuously scan the area from the Left mirror to rear window looking for any dangers

When front Left wheel is behind **GIVE WAY** line, Stop car - Check all round

Slowly reverse into road keeping car parallel to kerb until car is parallel to straight kerb

When so - Quickly straighten up wheel (to Right) - Double check Straight? Parallel?

Reverse slowly 3 car lengths - Stop car (1/2 meter from kerb / parallel) -

Make sure that you have selected a Safe and Convenient location

Apply handbrake and put gear into Neutral position